



CONSUMER SOLUTIONS
Your best friend!

www.crc.eu



CRC



About

CRC Industries is a worldwide leader in the production of specialty chemicals for maintenance and repair professionals and do-it-yourselfers, serving the automotive, heavy trucking, marine, electrical, industrial, hardware and aviation markets.

CRC was founded in 1958 as Corrosion Reaction Consultants with a single product. Today the company's products are sold throughout the US, Europe, South America and the Pacific Rim. CRC operates 12 facilities

that produce more than 70 million cans of aerosol products each year.

CRC is ISO 9001 certified and adheres to the strictest guidelines for quality in all facets of research, development and production.

Mission

Our mission is to satisfy the needs of general maintenance and repair markets for high quality specialty chemical products. By satisfying customer needs, we will be viewed as the industry leader and will achieve levels of

profitability and growth that place us consistently in the top tier of our competitive arena.

Quality policy

CRC Industries Europe commits to continually improve the value of products and services. Our goal is to deliver quality products that meet or exceed customer

requirements while always operating fairly and honestly with customers, suppliers and employees.

All statements in this publication are based on service experience and/or laboratory testing. Because of the wide variety of equipment and conditions and the unpredictable human factors involved, we recommend our products to be tested on-the-job prior to use. All information is given in good faith but without warranty neither expressed nor implied.

Note: The CRC product range is country-related. It is possible that some products, listed in the catalogue, might not be available. Product pictures not binding. Actual product may be different from picture due to change-over to new design.



Automatic MSDS updates

A service offered to CRC end-users and distributors as a means to automate the task of updating Technical Data Sheets (TDS) and Material Safety Data Sheets (MSDS), reducing the burden on staff having to remember, schedule, and undertake this HSE requirement.

By using My CRC, the end-user can ensure 100% compliance, automatically when there is a change to the datasheets, whether due to legislative changes such as hazard classifications or amendments to European law. These changes do not affect the product performance or availability, but in a highly regulated industry - up to date compliance is essential to avoid prosecution. The ongoing REACH legislation will affect all processors, distributors, and users of chemicals throughout Europe, however, many people are unaware of what this means. Using My CRC ensures that such changes will be incorporated into the MSDS and TDS, with updates sent automatically.

Offered through the CRC website (www.crcind.com) a simple registration process provides access to the complete CRC product range where selection of relevant products takes place - receive only relevant products updates. The system remembers the selection, and will automatically generate an email notification when a significant change occurs to either the TDS or MSDS, keeping relevant management and user personnel up-to-date.

A unique service, making compliance easy

- 24/7 availability on-line.
- Removes the potential to 'forget' to check for updates.
- Saves time & easy to use.
- Legislation changes frequently, do you always know when it has? Receive updates automatically in your mailbox.
- All information held securely.

MY CRC - DIRECTIONS

1. Navigate to **www.crcind.com/crc**
2. Click on the My CRC logo.
3. Select the link "New User".
4. Fill in company details.
5. The unique log-in ID and password will be emailed to you.
6. Enter the log-in ID and password on My CRC.
7. Once logged in, select the country from the drop-down list at the top of the page. The complete list of CRC products will now be displayed - using the selection boxes on the right, both MSDS and TDS updates can be selected.
8. Please confirm your selection, My CRC instantly updates which boxes have been selected.
9. Once all products of interest have been selected, simply close your internet browser - the process is now finished.
10. If product selection needs to be modified, simply log-in to My CRC and change the update options (click on the My CRC logo to update email preferences).

Find your product by functionality

PICTOGRAMS	6
MULTIPURPOSE	7
CLEANERS	10
CAR CARE	11
HEAVY DUTY	15
PRECISION	17
LUBRICANTS	19
OILS	20
PASTES	23
GREASES	24
ANTI-CORROSION PRODUCTS	25
PAINTS	27
SPECIALTY PRODUCTS	29
ADHESIVES	34
ADDITIVES	36
DIESEL	37
DIESEL / GASOLINE	39
GASOLINE	40
OIL	41
RADIATOR	42
PRODUCT VIDEOS	44
INDEX	46

Pictograms



360° spray system

Use your CRC product in any required angle.
Can also be used overhead.



Use every "x" km

For optimal results use your CRC product every "X" kilometer.



LOW GWP - Climate friendly

To avoid use and emissions of HFCs (R134a), CRC is proud to announce their climate-friendly HFO products. The new Low GWP (Global Warming Potential) icon will be displayed on all relevant packaging.

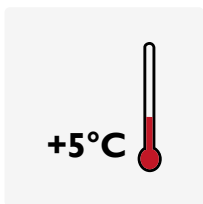
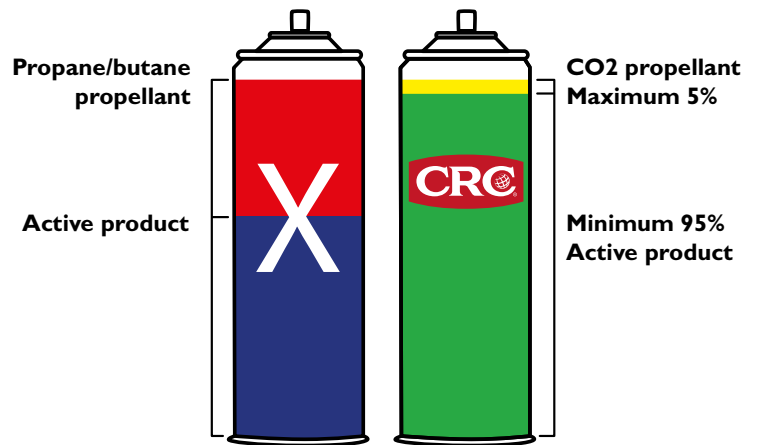


One can treats ± 'x' L fuel / oil / coolant



More product, less propellant

We respect the environment and if it's technically possible, we fill the majority of our aerosols with CO₂. Besides the environmental aspect, this ensures you have ± 35% more product.

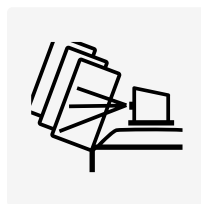


+5°C

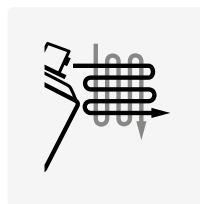
MINIMUM
TEMPERATURE



CLEAN SURFACE



SPRAY MULTILAYER

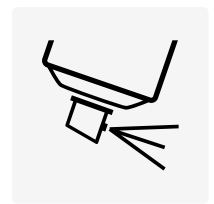


SPRAY DIRECTION

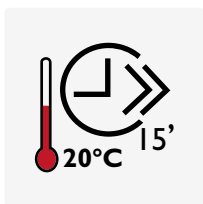


± 25cm

SPRAY DISTANCE

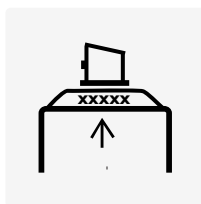


CLEAN NOZZLE



20°C 15'

DRYTIME



BEST BEFORE



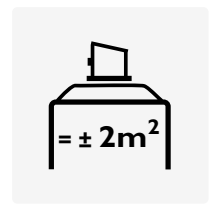
SHAKE



DON'T SHAKE



PEEL OFF



= ± 2m²

COVERAGE



MULTIPURPOSE

5-56

Multipurpose service spray. Loosens rusted parts and enables to start wet engines immediately. Its quick penetrating formula prevents against humidity and also prevents electrical failure. CRC 5-56 also protects against corrosion and even has excellent cleaning properties.

FEATURES

- Temporary protection of metal parts during storage
- Displaces and seals out water and moisture
- Loosens metal parts seized by dirt, corrosion or dried-up grease
- Extension tube for precise application
- A must for every toolbox

APPLICATIONS

- Seized and corroded parts
- Cleaning of plastics
- Displace moisture
- Surface treatment
- Door hinges
- Nuts and bolts
- Garden equipment



100 ml	Ref. 33022
250 ml	Ref. 33023
500 ml	Ref. 33024



5-56 + (NF)

A unique, newly developed formula. "The" non-flammable multipurpose service spray with the same applications and high quality of the standard 5-56 but with an improved and safer formula.

FEATURES

- Protects metals and alloys against corrosion
- Displaces and seals out water and moisture
- Loosens metal parts seized by dirt, corrosion or dried-up grease
- Cleans and lubricates
- Stops squeaking
- Extension tube for precise application
- A must have for every toolbox

APPLICATIONS

- Seized and corroded parts
- Cleaning of plastics
- Displaces moisture
- Surface treatment
- Door hinges
- Nuts and bolts
- Garden equipment



100 ml	Ref. 33101
250 ml	Ref. 33097



NEW FORMULA



5-56 CLEVER STRAW

A multipurpose service spray with a special new actuator. Never lose your straw again! The same high quality product as the standard 5-56 but even easier to apply with the handy Clever Straw.

FEATURES

- Protects metals and alloys against corrosion
- Displaces and seals out water and moisture
- Enables to start wet engines immediately
- Loosens metal parts seized by dirt, corrosion or dried-up grease
- Stops squeaking
- 2-in-1 spray pattern
- Wide spray for bigger surfaces
- Long extension tube for precise application
- A must have for every toolbox

APPLICATIONS

- Seized and corroded parts
- Cleaning of plastics
- Displace moisture
- Surface treatment
- Door hinges
- Nuts and bolts
- Garden equipment
- Boats



250 ml

Ref. 33025

500 ml

Ref. 33026



SCAN ME

NEW! CLEVER-STRAW

WIDE + PRECISION





CLEANERS

MOTOR CLEAN

CAR CARE

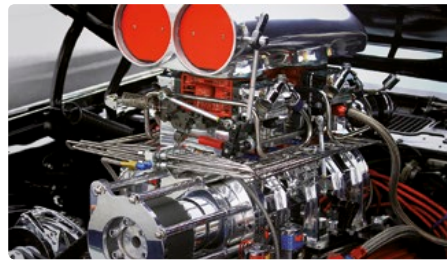
Cleans and degreases all engines and makes them look like new again. The fast acting powerful formula removes tar, oil and grease from the outside of the engine. Just spray it on and rinse it off. The fast acting formula will save you lots of time. We suggest to protect your engine with CRC 5-56 afterwards.

FEATURES

- Cleans and degreases all engines
- Easily washed away with water
- Easy to use with the handy aerosol sprayer
- Fast acting formula
- Highly effective

APPLICATIONS

- All sorts of car and truck engines
- Lawn mowers
- Garden machinery



250 ml

Ref. 33011



MOTOR CLEAN

CAR CARE

A powerful cleaner for any engine. CRC Motor Clean is a water based degreaser that effectively removes oil, grease and other contaminations from engines and components.

FEATURES

- Easy to use
- Water based degreaser

APPLICATIONS

- For all sorts of engines
- Car, motor cycles, lawnmower, ...



500 ml

Ref. 33033



SHAMPOO & WAX

CAR CARE

This high gloss CRC Shampoo & Wax is the perfect cleaner for bodywork, windows and trim. The product ensures safe, fast and efficient cleaning and will result in a bright streak-free finish. The CRC Shampoo & Wax comes in a handy bottle with child safe screw cap.

FEATURES

- Easy for all sorts of cleaning
- Biodegradable surfactants
- Economical in use

APPLICATIONS

- Glass or metal bodywork
- Cars, vans, campers, trucks, ...
- Boats
- Motorbikes



500 ml

Ref. 33032



TIRE SHINE

CAR CARE

CRC Tire Shine is the most effective product to clean and protect all sorts of tires. Its active foam gives a sparkling result. No washing or wiping is needed.

If you are looking for a simple and quick way to clean tires, CRC Tire Shine is your best help to make tires look like new again. It is definitely the best 'one step tire care' you need.

FEATURES

- Penetrates and cleans the rubber tire wall and makes rubber flexible
- Dries to a clear glossy film
- Protects against discoloration and oxidation
- Works by simply spraying the tire, without wiping or washing
- Leaves an inert film that prevents dirt build up
- No influence on drive and brake behavior when applied properly
- Overspray will not affect paint or wheel surfaces

APPLICATIONS

- Cars, trucks, busses
- Go-carts
- Not recommended for 2 wheel vehicles
- Only use on the side of the tire



250 ml

Ref. 33012



WHEEL CLEAN

CAR CARE

CRC Wheel Clean is a fast and effective cleaner for steel, chromium-plated and lightweight metal wheel rims, free from acids or solvents that may damage your car. Your wheel rims are easily cleaned while rubbing this cleaner with a sponge or cloth.

FEATURES

- Emulsifies brake dust
- No acids or harmful solvents added
- Dissolves oil and tar

APPLICATIONS

- For all steel, chromium-plated and lightweight metal wheel rims



500 ml

Ref. 33037



GLASS CLEAN

CAR CARE

A very effective, biodegradable car care cleaner for all types of glass to remove greasy marks, tar and insects fast. It can be used for many purposes: windshields, headlamps and bumpers. The foamy substance gives the product more time to dissolve the dirt.

FEATURES

- Biodegradable
- Fast removal of contaminants
- Effective stable foam
- Leaves no film
- Shiny finish
- Ensures a better view

APPLICATIONS

- Windshields
- Windows both in-and outside
- Mirrors
- Headlamps



250 ml

Ref. 33009



GLASS CLEAN

CAR CARE

Easy to use, powerful cleaner for any type of glass and/or mirror in your car and at home. Its liquid substance is developed to quickly dissolve any dirt, traffic film or insect residues instantly.

FEATURES

- Removes residues from insects
- Dissolves dirt and traffic film
- Suitable for all glass surfaces
- Will prevent your glass or mirror from becoming dirty again

APPLICATIONS

- All windscreens both in- and outside
- Headlights of cars
- Any type of mirror and glass



500 ml

Ref. 3303 I



COCKPIT MATT

CAR CARE

The silicone added to CRC Cockpit Matt will clean and renovate all kinds of plastics and rubbers in the car's interior. While cleaning (your dashboard), the product will leave a non-staining, clear water-repellent film, to protect your car's interior from color fading and hardening caused by ozone, U.V. rays and oxygen. It simply renovates the car's dashboard in a few seconds.

FEATURES

- Cleans, renovates and protects
- Leaves a water-repellent film
- Renovates the car's interior
- Removes stains
- Fresh, fragrant odor
- Harmless on rubbers and plastics

APPLICATIONS

- Polishes dashboards, bumpers, spoilers, vinyl roofs, ...
- Cleans all sorts of plastic and rubber
- Don't use on steering wheel and gear shift



250 ml

Ref. 33007



COCKPIT SHINE

CAR CARE

CRC Cockpit Shine is a dry and non-oily spray cleaner and protector for the interior of the car, mainly for cleaning dashboards, vinyl, plastic, rubber, wood and imitation leather. The surface is easily cleaned with a lint free cloth, no water needed.

FEATURES

- Dry and non-oily substance
- Cleans and protects
- Silicone Free
- Leaves an enjoyable orange odor

APPLICATIONS

- For all sorts of plastic, rubber, wood, dashboards, vinyl and imitation leather in cars, trucks, boats, ...
- Don't use on steering wheel and gear shift



250 ml

Ref. 33008



COCKPIT SHINE SPONGE

CAR CARE

This particular sponge for cleaning the car's interior renovates plastic, rubber, vinyl and wooden surfaces. The added silicone makes the sponge a powerful tool to refresh colors, while leaving a long-lasting anti-static film to the surface. While cleaning, the product creates a protective barrier against color fading. The CRC Cockpit Shine Sponge will make your car's interior look like new.

FEATURES

- Cleans, polishes and renovates
- Removes stains and nicotine
- Harmless to rubbers and plastics
- Leaves an anti-static film
- Easy to use without water

APPLICATIONS

- Dashboards
- Spoilers
- Vinyl tops
- Vinyl upholstery parts
- Bumpers
- Don't use on steering wheel and gear shift



Box

Ref. 33038



TEXTILE CLEAN

CAR CARE

CRC Textile Clean is a special foaming formula that removes stains and dirt from upholstery, carpets, fabric, vinyl and leather; perfect for car care or for daily use at home. This product will ensure a fresh and clean feeling to the cleaned area.

FEATURES

- Stable foam formula
- Penetrates quickly
- Easy to use

APPLICATIONS

- Carpets
- Fabrics and upholstery
- Seats
- Roof linings
- Door panels



250 ml

Ref. 33013



LEATHER CLEAN & PROTECT

CAR CARE

Dirty leather seats? CRC Leather Clean & Protect offers an excellent cleaning solution leaving your leather looking like new. Just spray it on and wipe off the dirt with a cloth.

FEATURES

- Fast action
- Easy to use aerosol
- Protects against future contamination
- Leaves no residue

APPLICATIONS

- Leather seats in cars, campers, boats, ...
- Can also be used in house for leather seats
- All leather material



250 ml

Ref. 33106



BRAKLEEN**HEAVY DUTY**

CRC Brakleen is a powerful and highly effective brake and parts cleaner with multiple active components. The cleaner comes in a handy spray system and removes oil, grease, traffic dirt and brake fluid very fast. It is safe for all metal surfaces and leaves no residue or stains.

FEATURES

- Highly effective
- Fast evaporation / fast drying
- Leaves no residues
- Pleasant smell
- Can also be used upside down

APPLICATIONS

- All brake and clutch parts
- Safe on most rubbers and plastics
- Metal surfaces and equipment



250 ml

Ref. 33005

500 ml

Ref. 33004

**MULTI CLEAN****HEAVY DUTY**

How to get rid of all types of oil, dirt or grease? With CRC Multi Clean! This cleaner comes in a handy trigger and is the most powerful degreaser for your car, boat, home and much more.

FEATURES

- Acts quickly
- Very powerful
- Antistatic effect

APPLICATIONS

- Can be used on all kinds of surfaces
- All outside parts of the car
- Motor bike
- Boat
- Caravan
- At home



500 ml

Ref. 33034

**PAINT STRIPPER****HEAVY DUTY**

If you are looking for a product that removes residues of paints, gaskets, glues and baked-on carbon deposits from metal surfaces easily, CRC Paint Stripper is the one you need. No more excessive scraping with abrasive tools is needed.

FEATURES

- Powerful formula
- Controlled evaporation
- Easy to use on vertical surfaces
- Time saving

APPLICATIONS

Removal of:

- Gasket residues
- Carbon Deposits
- Putties
- Adhesives and sealants
- Paints



250 ml

Ref. 33109



PLASTIC CLEAN

HEAVY DUTY

CRC Plastic Clean is the most complete cleaner for all rubber and plastic parts. It can be used on the inside and outside of the car and around the house. This all-round effective cleaner will remove oil, grease and residues from all plastics and makes your car look like new again.

FEATURES

- Easy in use
- Multifunctional for all plastics

APPLICATIONS

- Can be used inside and outside
- Rubber carpets
- Bumpers
- Wheel covers
- Plastic garden furniture



500 ml

Ref. 33035



POWER CLEAN

HEAVY DUTY

CRC Power Clean is a heavy duty cleaner, aiming for service and repair. Its fast and powerful formulation cleans and degreases all metal parts, machines and tools instantly.

FEATURES

- Fast and powerful
- Removes grease, oil and dirt
- User friendly, handy applicator

APPLICATIONS

- All metal parts, machines and tools
- Chains
- ...



250 ml

Ref. 33006



SUPER HAND CLEANER

HEAVY DUTY

CRC Super Hand Cleaner is a waterless, heavy-duty hand cleaner and is very effective on grease, carbon and other contaminations. It's the most perfect and quick cleaner for your hands when working inside or outside and when there's no easy access to water. Its antiseptic composition with lanolin makes it gentle and mild for the skin.

FEATURES

- Effective removal of all sorts of dirt (grease, paints, ink, ...)
- Fast cleaning capacity
- Can be used without water
- Gentle for the skin
- No disposal problems
- Contains natural abrasive particles to improve cleaning

APPLICATIONS

- To clean soiled hands when there's no access to water
- Construction sites
- On the road
- Also perfect for using around the house



150 ml

Ref. 30675



WIPES

HEAVY DUTY

CRC Wipes for multipurpose, powerful cleaning, all without using water. The wipes are impregnated with an effective cleaning and conditioning solution, effective and tough on contamination but gentle for the surface and your hands. The best solution for removing oil, grease, ink and adhesives fast when you are on the road.

FEATURES

- No use of water needed
- Gentle, yet effective
- Surfaces are clean and dry in one application
- Highly absorbent
- Non-hazardous to the user, nor the environment
- Handy for service engineers

APPLICATIONS

- All kinds of surfaces: tools, work pieces, ...
- Effective to remove adhesives, gasket residues, bitumen, silicones, ink, oil, grease, lubricants and wet paint
- Effective for hands and skin
- BBQ and garden equipment



50 pcs

Ref. 33036



AIRCO KLEEN

PRECISION

Your air conditioning system needs an optimal cleaning as well, especially after a period of inactivity or after a long winter period. CRC Airco Kleen is easy in use : a fresh odor in your vehicle is only one push away.

FEATURES

- No difficult disassembling on the airco system needed
- Leaves a fresh scent and prevents unpleasant odors
- Refreshing is done in less than 15 minutes
- Unique, effortless one push application method

APPLICATIONS

- Suitable for all airconditioning systems in cars, campers and trucks



100 ml

Ref. 33107



DUST OFF 360 (NF)

PRECISION

CRC Dust Off 360 is a high-pressure, non-flammable liquid blend that removes dust and cleans with a powerful jet of dry inert gas. It blows away lint, oxide particles and dust in a couple of seconds. It is the most effective product for cleaning electronic devices or data processing equipment and will prevent errors, downtime and damage.

FEATURES

- Perfect to use when liquid cleaners are no option
- Harmless to plastics
- Leaves no residues
- Moist free
- Can also be used upside down

APPLICATIONS

- For all electronic devices, data processing equipment
- Precision instruments
- Magnetic tape heads
- Communication equipment
- Cleaning of cable connections
- Keyboards



125 ml

Ref. 33019



ELECTRONIC CLEANER

PRECISION

CRC Electronic Cleaner is a very mild cleaner which removes light oils, fingerprints and dust from all kinds of consumer electronics. It provides a suitable and mild cleaning action for sensitive components without the risk of being damaged. May be used on sensitive plastics.

FEATURES

- Mild formula
- Removes dust and other light contaminations
- Quick drying
- Non-corrosive
- Leaves no residue
- Safe on commonly used plastics, rubbers and coatings

APPLICATIONS

- Consumer electronics: audio, video & hi-fi
- Alarm systems
- Switches, sensors and relays
- Motor controls
- Printed circuit boards
- PC's and telephones
- Do not use on energized equipment



250 ml

Ref. 33010



LABEL REMOVER

PRECISION

Removes all self-adhesive paper labels and stickers in no time, without leaving residues. This effective and high-quality adhesive and glue remover works at his best two minutes after wetting the surface.

FEATURES

- No residues left
- Free from CFC's and HFC's
- Comes in a handy aerosol packaging
- Time saving
- Dissolves sticky substances

APPLICATIONS

- For all self-adhesive paper labels on most surfaces (test on sensitive plastics & paints)
- Office equipment, cables, boxes, ...
- Household articles



250 ml

Ref 33108





LUBRICANTS

BIKE OIL

OILS

CRC Bike Oil is a multifunctional service spray for bicycles. It penetrates easily through rust and corrosion, displaces water and cleans away dirt. It even forms a great protection barrier against water. The best maintenance product for your bike.

FEATURES

- Protects against corrosion and rust
- Displaces water and moisture
- Makes rusted parts work again

APPLICATIONS

- All moving parts of the bike
- All year bike maintenance
- Perfect for winter storage



100 ml

Ref. 33021



CHAIN SPRAY

OILS

CRC Chain Spray is a water resistant lubricant spray that fully protects chains against corrosion. The specially formulated blend penetrates deeply into the surface and sets a long lasting film. It is a high quality lubricant that can be used in corrosive, high power and shock load conditions.

FEATURES

- Resists hot and cold water wash-off
- Reduces friction and wear
- Reduces noise and vibration
- Extends chain life
- Harmless to metals and most plastics and rubbers
- Does not contain chlorinated solvents

APPLICATIONS

- Chain drives
- Sprockets, hoists and pulleys
- Overhead door drives
- Motorcycle chains
- Tractors and garden equipment



250 ml

Ref. 33017



GUN CARE

OILS

After the firing session clean, lubricate and protect your gun with CRC Gun Care. Its formula penetrates very well and frees and removes powder residues and drives out moisture as well. It will ensure a greater reliability when using it for hunting, sports, competition etc. The perfect care for off-season storage and protection.

FEATURES

- Penetrates fast
- Drives out moisture
- Frees residues
- Protects against seizing and rust
- Cuts maintenance cost

APPLICATIONS

- All kinds of guns: rifles, pistols, revolvers, hand-guns, shotguns, black-powder guns, alarm pistols, ...



100 ml

Ref. 33110



LOCK DE-ICER

OILS

An effective lock spray which will quickly de-ice locks. Its complex formula de-ices and lubricates all types of lock parts quickly. It will also prevent the lock from freezing and will protect against corrosion.

FEATURES

- Prevents locks from freezing
- Dissolves ice, snow and frost
- Prevents from corrosion

APPLICATIONS

- All types of locks



15 ml

Ref. 33043



LOCK DE-ICER + PTFE

OILS

CRC Lock De-Icer + PTFE is an easy to use spray for opening doors without effort. Its complex blend with PTFE de-ices and lubricates all types of locks quickly. It will also prevent any lock from freezing and prevents against corrosion.

FEATURES

- Prevents locks from freezing
- Dissolves ice, snow and frost
- Prevents from corrosion
- Extra lubricating power

APPLICATIONS

- All types of locks



40 ml

Ref. 33042



LOCK OIL

OILS

CRC Lock Oil will clean and lubricate all locks and will give them a long-lasting protection. It also leaves a thin film that protects lubricating points in a corrosive environment. Perfect for using in every day life.

FEATURES

- Cleans, lubricates and gives a long-lasting protection to locks
- Will improve functionality of the lock
- Anti-corrosive
- Leaves a thin film that protects lubricating points
- No silicones added

APPLICATIONS

- All kind of locks at home and in the automotive industry
- For lubricating instruments in the precision-mechanic area



100 ml

Ref. 33020



MAGIC OIL

OILS

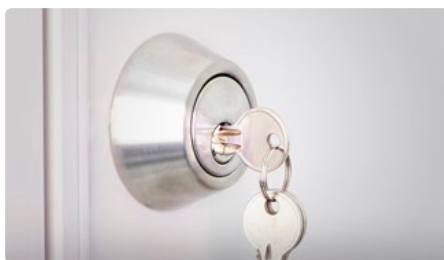
The most effective graphite lubricant for locks. The dry formula will ensure a smooth lock operation. Easy and quick in use by only spraying in the key opening. Perfectly water resistant and will not leave a sticky residue, like most oils for locks will. It is totally safe for all metal surfaces.

FEATURES

- Provides long lasting lubrication
- Excellent water resistance
- Functional over a wide temperature range
- Produces a very low coefficient of friction
- Lubricates without leaving a sticky residue

APPLICATIONS

- Locks
- Fine mechanics



15 ml (Blister)

Ref. 30525



RUST OFF

OILS

A quick acting, penetrating and lubricating oil that beats rust and corrosion. The special formula will penetrate rust, scale and corrosion quickly. Perfect to use for hard-to-reach areas. Use CRC Rust Off for easy dismantling of corroded screws.

FEATURES

- Penetrates fast
- Easy for hard-to-reach areas
- Frees metal parts from rust, corrosion or grease
- Leaves a solid lubrication
- Does not contain silicones
- Safe for all metals and for most plastics and rubbers

APPLICATIONS

- Seized and rusted nuts and bolts
- Locks, hinges and screwed parts
- Equipment disassembly
- Corroded fasteners
- Valves
- Garden equipment



250 ml

Ref. 33016



SILICONE SPRAY

OILS

CRC Silicone Spray is a functional, colorless spray to lubricate and protect plastic, rubber and wooden surfaces and will make them shine and look like new again. Also will it prevent rubbers from freezing and hardening. It's a handy spray that penetrates quickly into the surface and can be used in summer and winter.

FEATURES

- Forms a colorless and non-hardening film
- Protects the surface
- Penetrates fast

APPLICATIONS

- Plastic, rubber and wood
- Plastic drives and sliding mechanisms
- Precision instruments
- Anti-freeze for rubbers
- Protection and maintenance of rubbers
- Zippers



250 ml

Ref. 33015

500 ml

Ref. 33142



SILICONE STIFT

OILS

An easy to operate silicone stift, specially designed to treat and protect rubbers on cars and at home. The silicone oil will prevent rubbers from freezing in winter and from drying out in summer.

FEATURES

- Protects against environmental impacts
- Prevents from freezing in winter and drying out in summer
- Easy to use

APPLICATIONS

- Door and trunk seals of vehicles
- Window seals
- Sliding frames of electrical operated car windows



50 ml

Ref. 33029



COPPER PASTE

PASTES

CRC Copper Paste will prevent mechanical parts from seizing. This quality copper-based lubricant protects well against fretting and makes it easier to (dis)assemble mechanical parts. It also reduces friction and wear and is resistant to very low and hot temperatures.

FEATURES

- High pressure and high temperature resistant
- Enables easy disassembly of threaded parts, gaskets and flanges, even after long operational periods
- Threaded parts remain in good condition
- Separating film ensures favorable release behavior of the threaded connections
- Resistant to hot and cold water
- Lead-free and nickel-free
- Does not contain chlorinated solvents and uses hydrocarbon

APPLICATIONS

- An effective anti-seize lubricant for:
- Bolts, nuts, pins, bushings, , brake adjusters, spark plugs & splines
- Screw connections on hydraulic equipment
- Flanges, flange seals & exhaust screw connections
- Sliding sleeves / shaft



100 ml

Ref. 10690



MULTI GREASE

GREASES

CRC Multi Grease is an extreme pressure lithium soap-based grease to ensure rolling-element and sliding-contact bearings in all usual speed ranges. The grease's formula makes it suitable for applications in which impact loads and vibrations occur. It protects well against corrosion and is resistant to very high-pressure circumstances.

FEATURES

- Good oxidation stability
- High pressure resistance
- Water resistant
- Good protection against corrosion
- Adheres well
- Multipurpose

APPLICATIONS

- Rolling-element bearings
- Sliding bearings
- Garden equipment



100 ml

Ref. 30566



SUPER LONGTERM GREASE

GREASES

CRC Super Longterm Grease is an extreme pressure lithium soap-based grease. It lubricates all rolling-element and sliding contact bearings subject to extreme mechanical loads. This quality lubricant will prevent scuffing and will protect well against corrosion.

FEATURES

- Water resistant
- Protects against corrosion
- Adheres well
- Builds a long lasting lubrication layer

APPLICATIONS

- Rolling-element bearings
- Sliding-contact bearings
- Running-in of new and out-dated bearings
- Bolts
- Do not use on needle bearings



100 ml

Ref. 30565



WHITE GREASE

GREASES

CRC White Grease + PTFE will ensure a long lasting lubrication to all moving parts of a vehicle and at home. Its liquid substance sprays like an oil and sets like grease. Above all, it will reduce friction and wear and will leave a visible white, water resistant film, which will protect the parts against corrosion.

FEATURES

- Handy spray, does not run or drip off
- Protects metals and alloys
- Contains PTFE for extra and long lasting lubrication
- Assists during assembly
- Prevents seizing

APPLICATIONS

- Mechanical parts
- Friction points
- Garage doors
- Sliding doors



250 ml

Ref. 33014





ANTI-CORROSION PRODUCTS

ZINC PRIMER

A corrosion-protective primer suitable for any metal surface. Easy to paint over with any topcoat in less than an hour after using the primer. CRC Zinc Primer will ensure an excellent adhesion of the finishing coating.

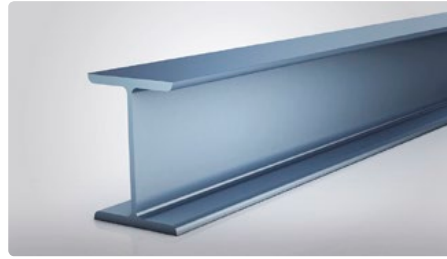
FEATURES

- Perfect to paint over
- Fast drying
- Lead and chromate free
- Fights rust and beats corrosion
- Its light grey color makes it also applicable for light topcoat colors

APPLICATIONS

All metal surfaces such as:

- Steel and car bodywork
- Garden machinery and equipment
- Steel building elements
- Chassis and frames
- Seams, spot welds, ...



250 ml

Ref. 33003



GALVA BRITE

CRC Galva Brite is an anti-corrosion touch-up spray paint that protects and coats any metal surface. You may expect a glossy aluminum look of the coated area, ages in time to match the look of galvanized steel.

FEATURES

- Good adhesion to metal surfaces
- Prevents rusting and does not peel off
- Lead and chromate free
- Excellent combination of zinc pigments and aluminum powder
- Flexible, protective film
- Bright and glossy appearance

APPLICATIONS

All steel and metal surfaces such as:

- Fences and gates
- Home, garden and farm equipment
- Chassis of trailers and caravans
- Guardrails
- Welding seams
- LPG storage tanks



250 ml

Ref. 33002



GALVANICE ZINC

If you are looking for a product that beats corrosion and fights rust, CRC Galvanice Zinc is a high-performant zinc-rich coating and an excellent touch-up primer for damaged galvanized surfaces.

FEATURES

- Allows spot welding
- No chlorinated solvents
- Excellent corrosion resistance
- Easy to add a colored topcoat after use
- Excellent adhesion on metals

APPLICATIONS

- Suitable for all steel surfaces such as: cars, trailers, caravans, ships, fencing and structural steel
- Preferably apply a topcoat afterwards



250 ml

Ref. 33001





PAINTS

PRO PAINT

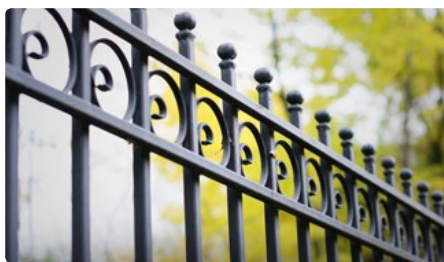
A quick drying, universal acrylic paint with an excellent coverage. CRC Pro Paint dries fast and can be used on multiple surfaces. Exists in different colors, all with a long-lasting gloss.

FEATURES

- Fast drying
- Excellent hiding power
- Long lasting gloss
- Good weathering and UV resistance
- Resists scratching and wear due to an increased hardness

APPLICATIONS

- Wood
- Plastics
- Home and leisure equipment
- Car rims
- Mailboxes
- ...



● Black Glossy	500 ml	Ref. 33139
● Black Matt	500 ml	Ref. 33138
● Blue	500 ml	Ref. 33137
● Green	500 ml	Ref. 33136
● Red	500 ml	Ref. 33131
● Yellow	500 ml	Ref. 33128
● Silver	500 ml	Ref. 33130
● White Glossy	500 ml	Ref. 33140
● White Matt	500 ml	Ref. 33141
● Transparent Varnish	500 ml	Ref. 33129
● Grey Primer	500 ml	Ref. 33135
● Red Primer	500 ml	Ref. 33134



PRO PAINT HI TEMP

A high quality universal lacquer for treated and untreated surfaces. CRC Pro Paint Hi Temp dries fast and can be used on multiple surfaces. Withstands high temperatures.

FEATURES

- Fast drying
- Excellent hiding power
- Long term protection
- Resists up to 500°C (Black) and 600°C (Aluminium) after full curing

APPLICATIONS

- Exhausts
- Barbecues
- Fire places
- ...



Hi Temp Aluminium	500 ml	Ref. 33133
Hi Temp Black	500 ml	Ref. 33132



Note: The color range may look different on a real product than what you see in the brochure.



SPECIALTY PRODUCTS

BIKE FIX

CRC Bike Fix is an easy and fast solution to seal and inflate bike and moped tires without a tire change. It inflates tires in a few seconds, perfect for a quick drive to a service facility for examination or a replacement.

FEATURES

- Fast and easy fix
- Forms a stable and durable film inside the tire
- Clean and easy to use

APPLICATIONS

- For all tubeless tires
- Bicycles and mopeds



150 ml

Ref. 33045



FIX

CRC Fix is designed to seal and inflate tires to give fast, temporary relief in emergency situations when changing a wheel with a flat tire is inconvenient. Works in a few seconds and leaves a rubber film on the inside tire wall that seals the puncture. A must-have in every car.

FEATURES

- Seals small holes in the tire
- Inflates in a few seconds
- No dismantling needed
- Fast and effective

APPLICATIONS

- Tubeless tires
- Cars, campers and motorcycles



300 ml

Ref. 33027

500 ml

Ref. 33028



FLAT TIRE FIX (NF)

CRC Flat Tire Fix seals and inflates a flat tire with a non-flammable gas in a few seconds, perfect for a short drive to a service facility. A fast, temporary relief in emergency situations when changing a wheel is inconvenient. A must-have in every car.

FEATURES

- Seals small holes in the tire
- Inflates in a few seconds
- No dismantling needed
- Fast and effective
- Non flammable

APPLICATIONS

- Tubeless tires
- Cars, campers and motorcycles



500 ml

Ref. 33098



MOTOR STARTER

Having trouble starting your engine at low temperatures and in humid conditions? CRC Motor Starter is an instant cold start for all diesel and petrol engines, while it avoids exhausting the battery. An essential tool, especially in colder weather. Gentlemen, start your engines.

FEATURES

- Ensures fast, economical starting of all diesel and gasoline engines
- Saves battery strain and engine during cold start
- Saves time and money
- An essential tool, particularly in winter

APPLICATIONS

Engines from:

- Cars
- Tractors
- Motorbikes and motorcycles
- Chain saws
- Lawn mowers



250 ml

Ref. 33030



POLE PROTECT

A quick drying protecting spray with a prominent blue color, which makes it easy to control the points of application. CRC Pole Protect is perfectly water repellent and prevents sulfating battery connectors and poles. A special formula, which protects against future corrosion.

FEATURES

- Forms a thick pasty protective film
- Water repellent
- Protects against future corrosion

APPLICATIONS

- Battery clamps in the automotive sector
- Unprotected push-pull connectors
- Spring loaded contacts on sliding doors and third/fifth doors in cars



250 ml

Ref. 33111



LEAK FINDER

The best water-based gas leak detector. CRC Leak Finder detects gas leaks in pipes and pressurized systems quickly by forming highly visible bubbles when applied over any leak. It's a non-staining, non-corrosive and safe product, in a handy aerosol spray, perfect for using in all directions.

FEATURES

- For all types of gasses: natural gas, LPG, refrigerants, compressed air, butane, propane, nitrogen, acetylene, carbon dioxide, ...
- Safe on metals and plastics
- Easy application

APPLICATIONS

- LPG fuelled engines
- Refrigeration units and air conditioners
- Pipes and valves
- Screw-connections
- Compressors
- Gas barbeques
- Terrace heaters
- Bike tires



250 ml

Ref. 33112



BELT SPRAY

CRC Belt Spray prevents slippage on flat, round and V-belts and adheres strongly to any belt material. The handy aerosol spray forms a tacky, non-drying, water-resistant and stable film, which gives extra pulling power and makes belts more efficient.

FEATURES

- Prevents slippage on flat, round and V-belts
- Adheres strongly to any belt material
- Enhances transmission efficiency
- Reduces squeaking noise caused by belt slipping

APPLICATIONS

Eliminates slippage in flat, round or V-belts made out of rubber, leather, fabrics and plastic used in:

- Compressors
- Pumps
- Generators
- Fans
- Motors



250 ml

Ref. 33018



ICE OFF

CRC Ice Off is a fast and efficient de-icing product for all glass surfaces and rubbers. Its handy spray can even be used on thick ice layers. No need for an ice scraper.

FEATURES

- Fast and efficient
- For thin and thick ice layers
- No scraping needed
- Not harmful to your windscreen

APPLICATIONS

- Windscreens
- Mirrors
- Headlights
- Door rubbers



500 ml

Ref. 33044



EXHAUST REPAIR GUM

CRC Exhaust Repair Gum quickly repairs small holes and cracks in exhaust systems without welding or disassembling. Even for hard to reach areas, the gum is easily applied by hand or with a putty knife, or it can be softened with water. It's the best solution to fix and repair your exhaust.

FEATURES

- Hardens by an overnight dry
- Ensures gas-tight repairs
- Reduces lasting noise
- Asbestos- and solvent-free
- Powerful: withstands heat, water and vibrations after hardening
- Presented in a tin for easy access

APPLICATIONS

- Exhaust pipes
- Silencers



200 g

Ref. 33117



EXHAUST REPAIR BANDAGE

CRC Exhaust Repair Bandage is an epoxy-impregnated glass fiber bandage that repairs large holes and cracks in exhaust systems, without welding or disassembling. The bandage is easy to use and reduces noise. It's the best heat resistant, long lasting and gas-tight repair.

FEATURES

- Stops dangerous fumes escaping from untight exhausts
- Sets while driving
- No wetting required
- Withstands temperatures up to 400°C
- Completely asbestos-free.
- Supplied with foil shield to cover large holes and wire to hold the bandage in place during bonding

APPLICATIONS

- Exhaust pipes
- Silencers



6 units

Ref. 33118



EXHAUST MOUNTING PASTE

CRC Exhaust Mounting Paste will simplify the assembly and disassembly of exhaust components. It is a smooth, heat resistant paste, which ensures a reliable seal against carbon monoxide, and other dangerous exhaust fumes. It is presented in tubes for an easy application and definitely saves money and time during the (dis)assembly.

FEATURES

- Expands and sets quickly when heated
- Mounted joints and flanges are easily separated by a sharp knock
- Withstands heat, water and vibrations after hardening
- Asbestos- and solvent-free

APPLICATIONS

- Manifolds
- Exhaust flanges
- Mufflers



150 ml

Ref. 33119





ADHESIVES

FAST GLUE

An excellent spray adhesive, perfectly suitable for many different substrates. The spray makes it easy to use, even on vertical surfaces and will provide instant 'grab', by allowing pressure to be exerted on the bond before full cure strength is achieved.

FEATURES

- Easy to fix many different materials
- Tack time: less than 30 seconds
- Comes in an easy to use spray
- Provides permanent bonds
- Clear, amber liquid
- Free from chlorinated solvents

APPLICATIONS

- Suitable for carpet and flooring materials
- For assembling glass fiber reinforced polyester
- Can also be used on wood, plastics, paper, ...



250 ml

Ref. 33102



QUICK FIX

If you are looking for an adhesive to position a great variety of materials precisely and which is easy in use as well, CRC Quick Fix is the one you need for all your general use gluing solutions.

FEATURES

- Multifunctional
- Easy in use with bottle tube
- Extremely strong bonding
- Fast curing time (20 to 40 seconds)
- A fluid adhesive

APPLICATIONS

- Suitable for a wide variety of materials (e.g.: metals, plastics, rubber, glass, wood, ceramics, elastomeric materials, ...)
- Not suitable for polyethylene, polypropylene, PTFE and silicone



3 g

Ref. 30710





ADDITIVES

DIESEL ADDITIVE

DIESEL

Cetane and lubricity improver. Premium detergency performance giving reduced deposits.

Effective foam plus corrosion control and water separation capability. Keeps fuel system clean. Prevents power loss due to fouled injectors. Helps restore engine performance with regular use.

APPLICATIONS

- In all grades of diesel



200 ml

Ref. 32026



DIESEL ANTI PARAFFINE

DIESEL

Cold weather diesel fuel additive.

Prevents wax crystal formation and plugging of diesel filter. Ashless. Low temperature flow improver. Provides superior CFPP and pour point depression. Minimizing the need for kerosene dilutions.

APPLICATIONS

- In all grades of diesel



200 ml

Ref. 32027



DIESEL SMOKE STOP CAR

DIESEL

Anti-smoke for car diesel-engines.

Improved performance by cleaning and protecting the complete fuel system. Compatible with catalytic converters. Reduced emissions. Keeps fuel system clean. Prevents power loss due to fouled injectors. Improves cetane rating, thus reducing emissions and optimizing performance. Significantly reduces combustion chamber, intake valve, and port fuel injector deposits. Significantly improves fuel economy. Improves drivability by helping reduce surging, stumbling, hesitation, stalling, and rough idling. Eliminates the origin of the "black diesel smoke" which provokes disappointing emission controls.

APPLICATIONS

- In all grades of diesel



200 ml

Ref. 32028



DPF CLEANER

DIESEL

Diesel Particulate Filter Cleaner burns the soot off during normal engine operation.

Excellent stability in all driving conditions. Resistant to high Sulphur fuels. Does not influence the paraffin formation during cold weather. Cleans the injectors to reduce future soot build up in the filter.

APPLICATIONS

- Can be used in all commercial diesel engines with a catalytic soot filter



200 ml

Ref. 32433



INJECTOR CLEANER**DIESEL / GASOLINE**

Cleans injectors and entire fuel system of diesel and gasoline engines.

Prevents injector fouling resulting in improved engine performance and acceleration. Efficient water separation capability. Ethanol (E10) compatible. Prevents power loss due to fouled injectors.

APPLICATIONS

- In all grades of petrol



200 ml

Ref. 32032

**FUEL STABILIZER****DIESEL / GASOLINE**

Controls and reduces the formation of gum, varnish and peroxides during storage of diesel and gasoline.

Reduces gum and varnish in carburetors and fuel system parts. Reduces oxidation of fuel even when in contact with bronze fittings in the fuel system. Provides corrosion protection. Can be used in 2 and 4 cycle engines. In 2 cycle engines also add the normal 2 cycle oil separately to the fuel.

APPLICATIONS

- A fuel stabilizer suitable for gasoline and diesel fuel. The gasoline application is primarily for small engines and for prolonged storage of vehicles.

Can be used to meet the "Premium Diesel" definitions for:

- ASTM D2274 Stability during fuel storage
- Thermal Fuel Stability using the 180 minute, 302°F Oxidation Test
- Corrosion Protection ASTM D665A or ASTM D665B
- Water Tolerance ASTM D1094



200 ml

Ref. 32039

**GASOLINE ADDITIVE****GASOLINE**

Guarantees a clean fuel system.

Smooth and regular fuel supply to carburettor and injection engines. Protects against corrosion. Premium inlet valve cleanliness performance. Prevent fuel system injector and inlet valve deposits. Improved vehicle performance under engine cold start. Ethanol (E10) compatible.

APPLICATIONS

- In all grades of gasoline



200 ml

Ref. 32031



FUEL SYSTEM CLEANER

GASOLINE

Thorough cleaning from tank to combustion. **Significantly reduces combustion chamber, intake valve, and port fuel injector deposits.** Restores “like new” performance to high mileage vehicles. Significantly improves fuel economy. Improves power. Improves drivability by helping reduce surging, stumbling, hesitation, stalling, and rough idling. Helps improve acceleration. Helps restore engine performance. For 1-tank clean up of the complete fuel system and combustion chamber.

APPLICATIONS

- In all grades of gasoline



200 ml

Ref. 32042



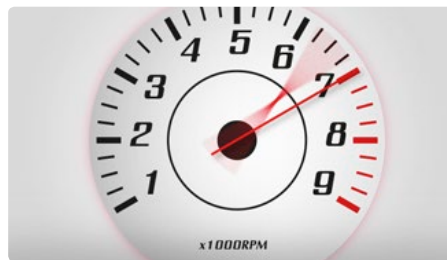
OCTANE BOOSTER

GASOLINE

Boosts the octane level and gives extra lubricity to the valve seats, thus preventing valve seat recession on both old and new engines. Increased octane level in unleaded gasoline. Maximum protection from valve seat recession (VSR). Reduced emissions. Improves power. Helps improve acceleration. Provides corrosion protection. Compatible with ethanol (E10). The unique formulation offers a wealth of benefits to both new and old engine types.

APPLICATIONS

- A gasoline performance package that provides octane enhancement and valve seat recession (VSR) protection



200 ml

Ref. 32040



VALVE CLEANER

GASOLINE

Cleans and prevents deposit built-up on valves and in combustion chambers.

Optimizes the value of an exact valve timing. Ethanol (E10) compatible. Average inlet valve deposits < 10 mg/valve at recommended treat rate. (industry standard M102E IVD test) Up to 43% clean up of inlet valve deposits with constant use.

APPLICATIONS

- In all grades of gasoline



200 ml

Ref. 32037



OIL DRIP STOP

OIL

Stops motor oil leaks, reduces oil consumption and pollution. Compatible with all motor oil types. Contains a viscosity improver. A synthetic seal swell additive. Works quickly. Eliminates the need for expensive and time consuming engine overhauls.

APPLICATIONS

- Suited for semi-synthetic mineral and synthetic motor oils



200 ml

Ref. 32034



MOTOR FLUSH

OIL

Removes sludge, gum, rust and varnish from interior engine parts. (gasoline & diesel) Use prior to oil change. High performance dispersant. Provides excellent control of engine deposits under stop-go conditions. Ensures, the engine oil reaches, all places for good lubrication and cooling. Superior wear and bearing corrosion control, giving maximum engine protection.

APPLICATIONS

- Suited for semi-synthetic mineral and synthetic motor oils



200 ml

Ref. 32030



RADIATOR CLEAN

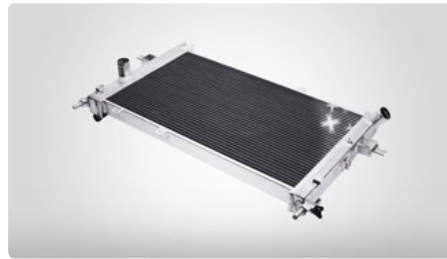
RADIATOR

Removes sludge, scale and rust from the cooling system.

Protects against corrosion. Will quickly remove numerous different types of soiling and contamination. Safe on all metal surfaces, does not stain. Safe on most rubbers, plastics and coatings. Test on sensitive or stressed materials before use. Protects metals and alloys.

APPLICATIONS

- Cooling system on combustion engines



200 ml

Ref. 32035



RADIATOR SEAL

RADIATOR

Stops small radiator leaks.

Prevents corrosion. Compatible with common cooling fluids. Excellent sealing properties. Non corrosive. Safe on all metal surfaces, does not stain. Safe on most rubbers, plastics and coatings. Test on sensitive or stressed materials before use. Protects metals and alloys.

APPLICATIONS

- Cooling system on combustion engines (Not for cooling circuits having a built-in filter unit)



200 ml

Ref. 32036



Check out our new videos

www.crc.eu

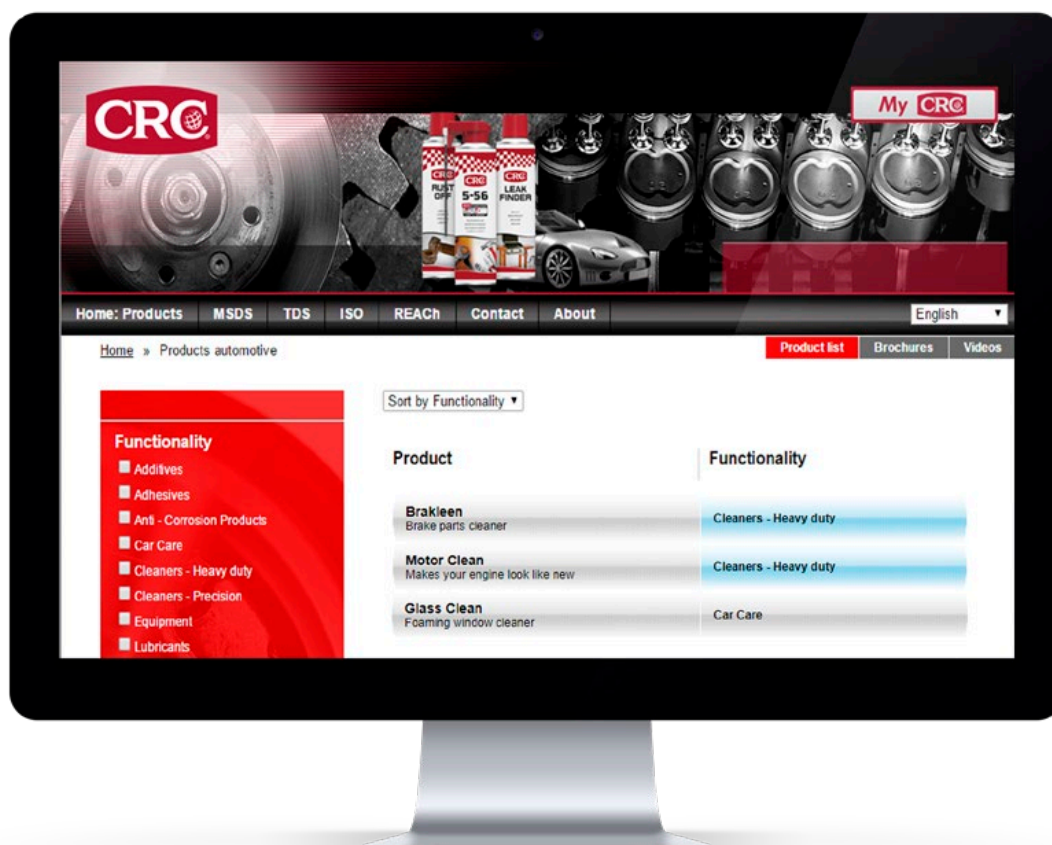
CRC Industries Europe can now be found on Youtube!

Search for CRC Industries Europe on Youtube and you will be able to view all our new product videos! Subscribe to the channel and you will automatically receive updates on new videos!



Or find our movies on the website!

- Go to www.crc.eu
- Click on videos



Displays

Ref. 91101088



Ref. 91101081



Ref. 91101089



Ref. 91101090





Product index

5-56	8	Leak Finder	31
5-56 + (NF)	8	Leather Clean & Protect	14
5-56 Clever Straw	9	Lock De-Icer	21
Airco Kleen	17	Lock De-Icer + PTFE	21
Belt Spray	32	Lock Oil.....	21
Bike Fix	30	Magic oil	22
Bike Oil.....	20	Motor Clean.....	11
Brakleen	15	Motor Clean.....	11
Chain Spray.....	20	Motor Flush.....	41
Cockpit Matt.....	13	Motor Starter	31
Cockpit Shine.....	13	Multi Clean	15
Cockpit Shine Sponge.....	14	Multi Grease.....	24
Copper Paste	23	Octane Booster.....	40
Diesel Additive	37	Oil Drip Stop	41
Diesel Anti Paraffine.....	37	Paint Stripper	15
Diesel Smoke Stop Car	38	Plastic Clean	16
DPF Cleaner	38	Pole Protect.....	31
Dust Off 360 (NF).....	17	Power Clean.....	16
Electronic Cleaner	18	Pro Paint.....	28
Exhaust Mounting Paste	33	Pro Paint Hi Temp.....	28
Exhaust Repair Bandage	33	Quick Fix.....	35
Exhaust Repair Gum.....	32	Radiator Clean	42
Fast Glue.....	35	Radiator Seal	42
Fix	30	Rust Off.....	22
Flat Tire Fix (NF)	30	Shampoo & Wax	11
Fuel Stabilizer	39	Silicone Spray	22
Fuel System Cleaner	40	Silicone Stift.....	23
Galva Brite.....	26	Super Hand Cleaner	16
Galvanice Zinc	26	Super Longterm Grease	24
Gasoline Additive.....	39	Textile Clean	14
Glass Clean.....	12	Tire Shine.....	12
Glass Clean.....	13	Valve Cleaner	40
Gun Care	20	Wheel Clean	12
Ice Off.....	32	White Grease	24
Injector Cleaner	39	Wipes.....	17
Label Remover	18	Zinc Primer	26



CRC Industries Europe

Touwslagerstraat 1
BE-9240 Zele
Belgium

Tel +32 (0) 52 45 60 11
info@crcind.com

www.crc.eu

Your CRC Distributor